



CICR

**ANNUAL
REPORT**
2007-08



RCGM Strip trial- LRA 5166-Bt



Improved bullock drawn cotton planter

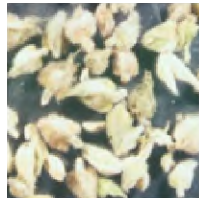
Campylomma livida Reuter
Insect stages and damage symptoms



Adult



Nymph



Damaged and shed squares



**Distorted petals
and blackened anthers**

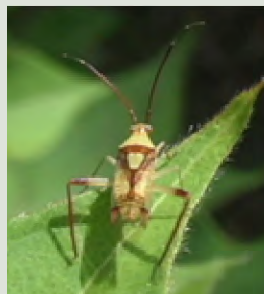


**Boll with black wart
and beakness**

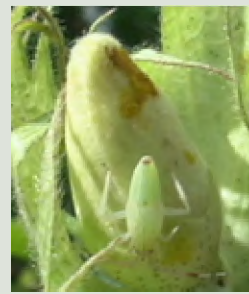
Hyalopeplus lineifer Walker



Nymph



Adult



Feeding damage on square